

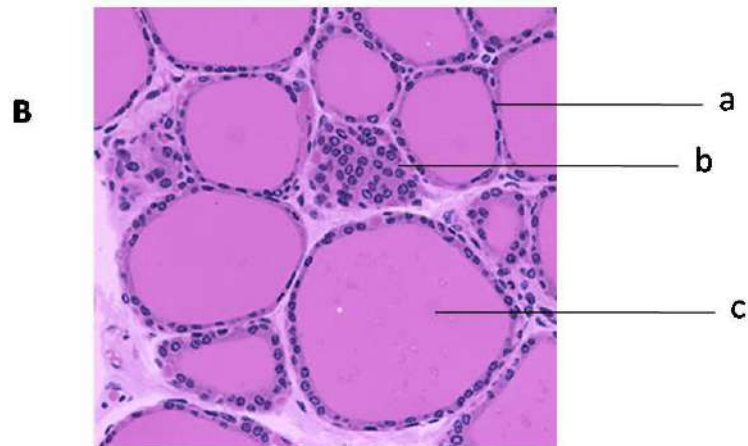
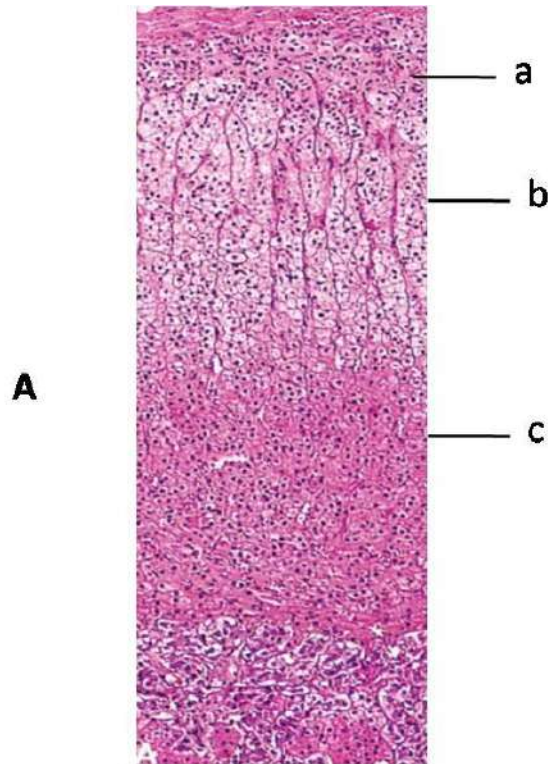
**UNIVERSITY OF CALCUTTA**  
**CITY COLLEGE CENTRE**  
Zoology Honours  
Paper: DSE-B-1-P  
[ZOOA- DSE-B-1-P Examination 2020; Online]  
**Endocrinology**

**Full Marks: 30**

**Time – 2 hours**

*The figures in the margin indicate full marks*

1. Identify the histological sections and name the labeled parts as marked in the provided photographs (A,B). Write 3 key characters of each tissue sample. (1+3+3) x 2=14



2. What is the basic principle of Haematoxylin and Eosin staining of tissue? Write the steps of such staining procedure. 3+8 = 11
3. a) Why fixation is required for histological study of any tissues?  
b) Name one fixative and one mounting substance used for routine histological preparation of tissues. 3+2 = 5